



andrew nunn
ASSOCIATES

ASKING PRICE

£625,000

Grove Park Road

London, W4 3RU

PROPERTY SUMMARY

A fabulous 874sqft two bedroom two bathroom first floor flat in this prominent building found in the heart of Grove Park only moments from the river Thames and mainline station.

The accommodation comprise; large hallway, 22' x 16' double reception room, fitted kitchen over looking roof terrace, two double bedrooms, two bathrooms (one en-suite) and private roof terrace.

Outside are beautiful communal gardens.

The property is a short walk from the river Thames and Chiswick Mainline station (Waterloo) and the immediate area is well served by an array of local shops along with the historic pubs on Strand On The Green.

Long leasehold

2



2



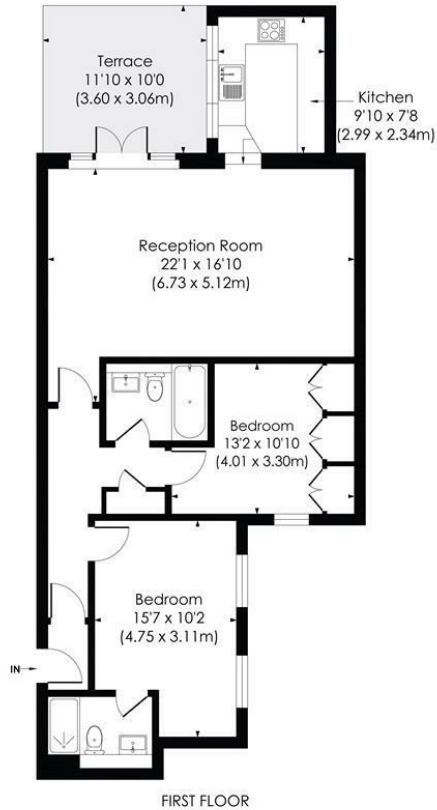
1





GROVE PARK ROAD, W4

Approx. Gross Internal Floor Area
874 Sq. ft/81.19 Sq. m



© Pixangle Property Marketing Ltd. info@pixangle.com Tel: 0208 870 2118

pixangle
PROPERTY MARKETING

This floor plan has been prepared for the purpose of illustration only in accordance with the latest RICS code of measuring practice and is not to scale. All measurements and areas are approximate and whilst every effort has been made to ensure the accuracy of the plan contained here, no responsibility is taken for any error, omission or misstatement.

LOCAL AUTHORITY

London Borough of Hounslow

TENURE

Leasehold

COUNCIL TAX BAND

E

VIEWINGS

By prior appointment only

Energy Efficiency Rating

	Current	Potential
Very energy efficient - lower running costs		
(92 plus) A		
(81-91) B		
(69-80) C		
(55-68) D		
(39-54) E		
(21-38) F		
(1-20) G		
Not energy efficient - higher running costs		
England & Wales	EU Directive 2002/91/EC	

Agents Note: Whilst every care has been taken to prepare these particulars, they are for guidance purposes only. All measurements are approximate and are for general guidance purposes only and whilst every care has been taken to ensure their accuracy, they should not be relied upon and potential buyers/tenants are advised to recheck the measurements



OFFICE ADDRESS

The Clock House
66 South Parade
Chiswick
London
W4 5LG

OFFICE DETAILS

020 8995 1500
sales@andrewnunnassociates.co.uk
andrewnunnassociates.co.uk